

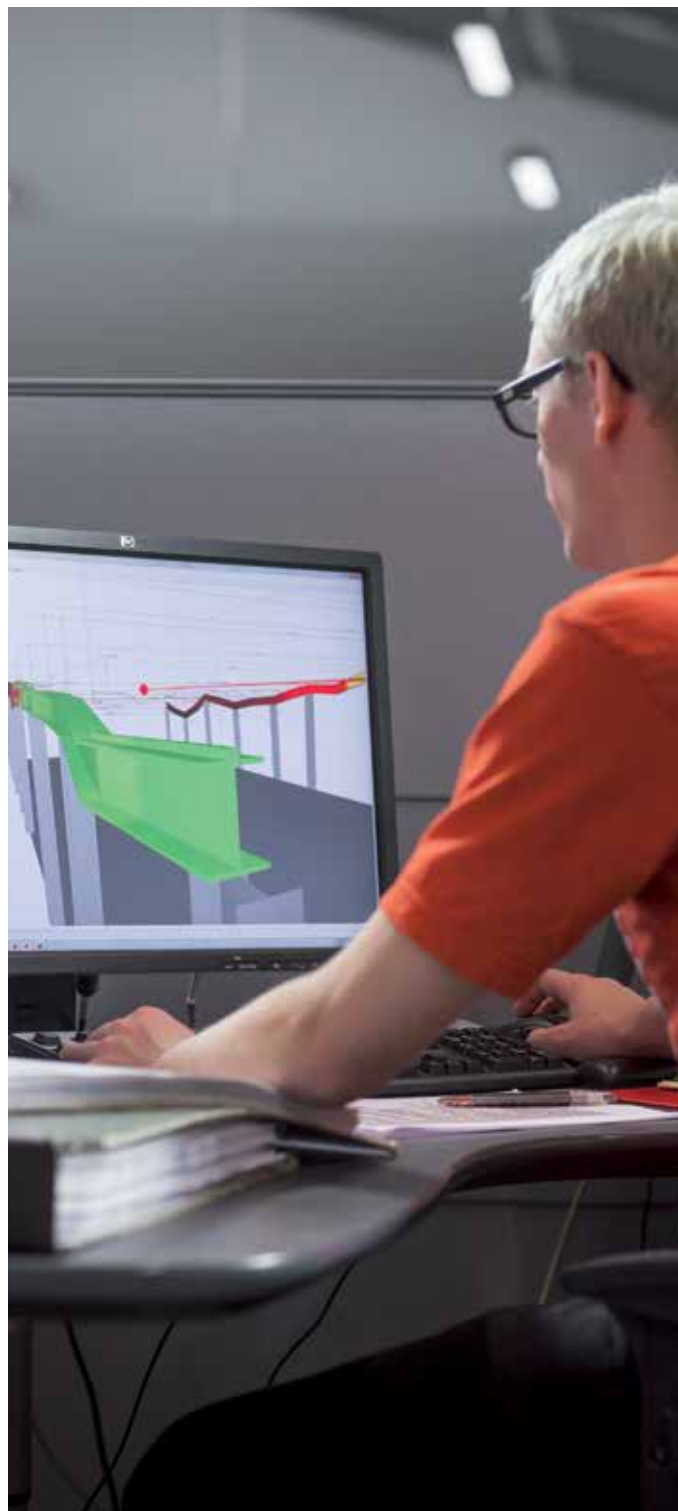
INDUSTRIAL CRANES
NUCLEAR CRANES
PORT CRANES
HEAVY-DUTY LIFT TRUCKS
SERVICE
MACHINE TOOL SERVICE

CONSULTATION SERVICES

KONECRANES[®]
Lifting Businesses[™]

RailQ[™] RUNWAY SURVEY

INDUSTRY-LEADING RAIL ANALYSIS



FAST, SAFE, ACCURATE CRANE RAIL SURVEY

Konecranes RailQ™ Runway Survey is an industry-leading rail analysis. It delivers accurate alignment information of your rail and expert recommendations on needed corrective actions. RailQ helps you to increase the safety and performance of your cranes.

RailQ measurements include:

- span
- straightness
- elevation
- rail-to-rail elevation

Survey results are reviewed with you during our consultative process.

ACCURATE MEASUREMENTS WITH LESS DOWNTIME

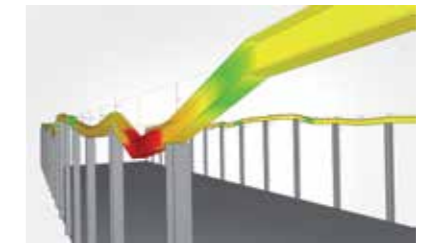
RailQ uses a remotely-operated robot combined with a visual inspection to provide you with an in-depth view of the alignment and condition of your crane rail.

The survey data is accurate and repeatable. Our proprietary analysis and visualization software produces reports that visualize the problem areas. Konecranes engineers review all collected data and provide recommendations for corrective actions.

BENEFITS OF RAILQ

- Accurate information on the condition and alignment of the rail.
- Reliable results through systematic application of technology by skilled people.
- Conducting a RailQ analysis requires less time than a traditional survey.

RAILQ DELIVERS EASILY INTERPRETED RESULTS



3D visualization of the condition of the rail.



Problem areas are easily communicated.



Recommendations with on-site consultation.

KONECRANES RAILQ RUNWAY SURVEY AND CRANEQ CRANE GEOMETRIC SURVEY WORK TOGETHER FOR A COMPLETE VIEW OF CRANE AND RAIL GEOMETRY.



INDUSTRIAL
CRANES



NUCLEAR
CRANES



PORT
CRANES



HEAVY-DUTY
LIFT TRUCKS




SERVICE



MACHINE
TOOL
SERVICE



Konecranes is a world-leading group of Lifting Businesses™ offering lifting equipment and services that improve productivity in a wide variety of industries. The company is listed on NASDAQ OMX Helsinki Ltd (symbol: KCR1V). With almost 12,000 employees at 600 locations in nearly 50 countries we have the resources, technology and determination to deliver on the promise of Lifting Businesses™.

© 2014 Konecranes Plc. All rights reserved. 'Konecranes', 'Lifting Businesses' and  are either registered trademarks or trademarks of Konecranes Plc.

